



# GLASSWASHER

MODEL G-2000-F

**BLAKESLEE**

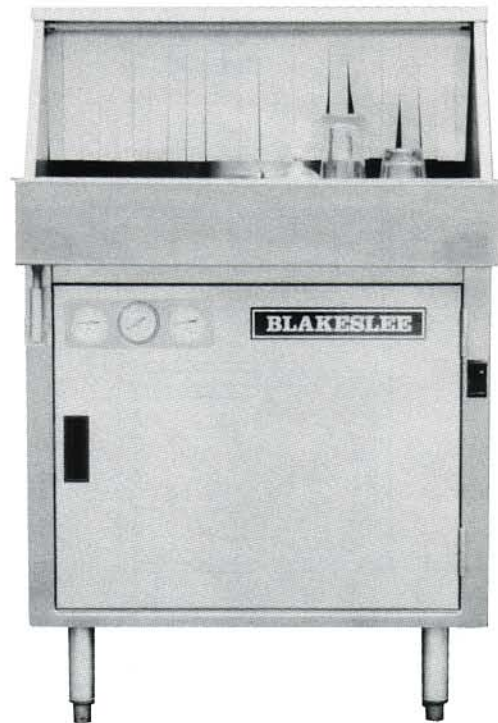
- Solid Stainless Steel Construction
- Wash, Rinse, and Pressure Gauges located in Front
- Heavy Duty Scrap Tray
- Top and Side Access to Vacuum Breaker
- Heavy Duty Detergent Dispenser with Audio Alarm for Low Detergent Warning
- Adjustable Liquid Rinse and Sanitizer Pumps
- Simplicity
- Dependability
- Superior Performance
- Capacity: 1000 Glasses Per Hour

**DESIGN:** Glasswasher shall be a fully automatic, rotary type glass-washing machine. Glasswasher shall be equipped with three separate pumps for detergent, sanitizer, and rinse aid. Initial fill of wash tank shall be automatic with a flip of a switch.

**DIMENSIONS:** Glasswasher shall be 39" in height, 25-1/8" in width, and 26" in depth.

**CONSTRUCTION:** Glasswasher shall be constructed of 18 gauge stainless steel with stainless steel legs.

**ELECTRIC CONTROL PANEL:** Controls shall be an integral part of machine.



**CONVEYOR:** Non-abrasive conveyor shall rotate in a clockwise direction.

**WASH AND RINSE:** Glassware shall be washed with a minimum of 140° recirculated water by upper and lower spray arms. Non-recirculated 75° rinse water shall also be through upper and lower spray arms.

**TANK HEATING:** Tank shall be heated by a 3 K.W. electric heating element.

**STANDARD EQUIPMENT:** Storage shelf for three (3) one-gallon size chemical containers behind door located in front of machine; splash curtain.

*Specify Blakeslee*

# GLASSWASHER

## MODEL G-2000-F

### SPECIFICATIONS

#### Electrical:

Volts	Phase	Load AMPS
220	1	15

Water Requirements (100%)	
Hot Inlet Temperature	140°F
Cold Inlet Temperature	75°
Inlet Pressure	20 psi
Inlet Size	1/2" Hose
Drain Size (gravity)	1-1/2" OD
Water Consumption	2.8 gpm
Initial Fill	3 gallons

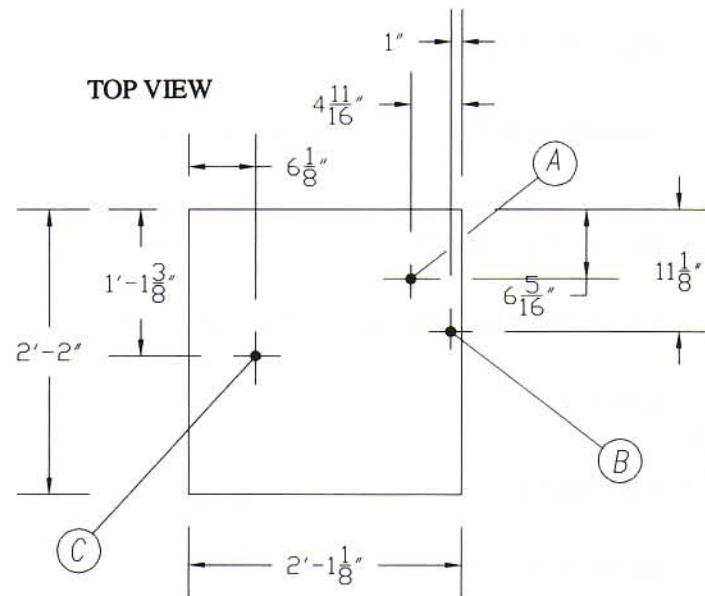
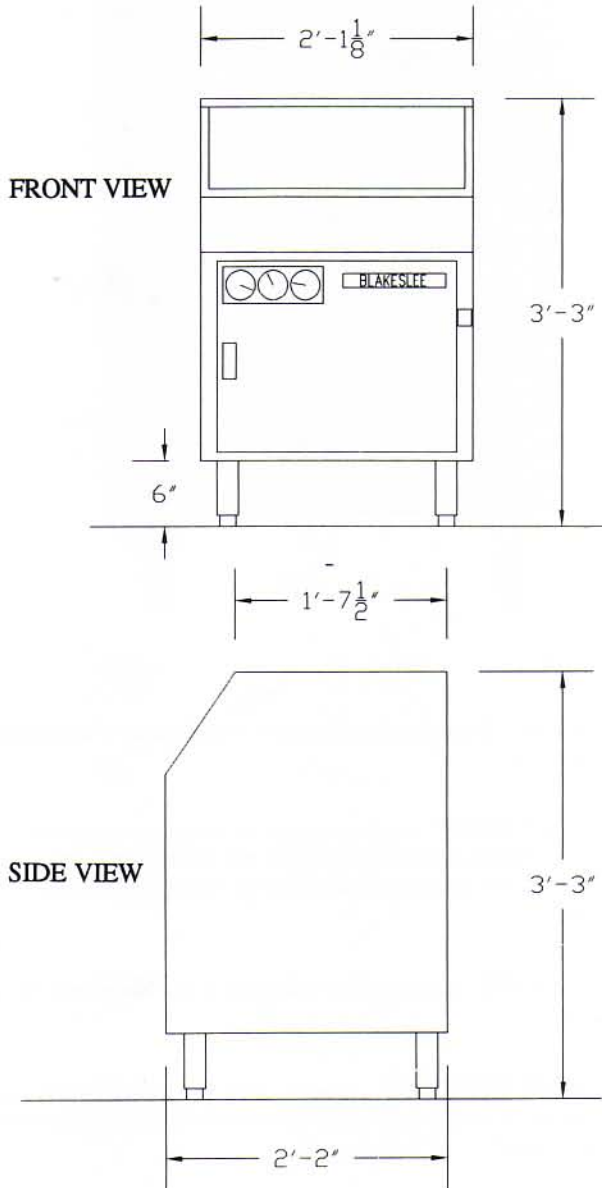
### OUTSTANDING FEATURES

**CAPACITY:** 1000 Glasses Per Hour

**OPERATING CYCLE:** Total Cycle Time - 3 Minutes.

**CONTROLS:** On/Off Switch located on front of machine.

**SUPERIOR WASH AND RINSE:** Top and bottom spray arms.



- Ⓐ HOT WATER CONNECTION (1/2" N.P.T. FEMALE FITTING)
- Ⓑ COLD WATER CONNECTION (1/2" N.P.T. FEMALE FITTING)
- Ⓒ 1-1/2" O.D. DRAIN

APPROXIMATE SHIPPING INFORMATION			
MODEL	DIMENSIONS	WEIGHT	CUBE
G-2000-F	47" X 27" X 28.5"	160 lbs.	21.0 Ft. <sup>3</sup>

All Blakeslee dishwashers are designed to be in compliance with NSF, UL, CSA, and ASSE standards.

**SPECIFICATIONS SUBJECT TO CHANGE WITHOUT NOTICE.**



**BLAKESLEE**  
 1844 South Laramie Avenue  
 Chicago, IL 60804  
 Phone: (708) 656-0660  
 FAX: (708) 656-0017

**BLAKESLEE**  
 66 Crockford Boulevard  
 Scarborough, Ontario, Canada M1R 3C3  
 Phone: (416) 751-2625  
 FAX: (416) 751-8539